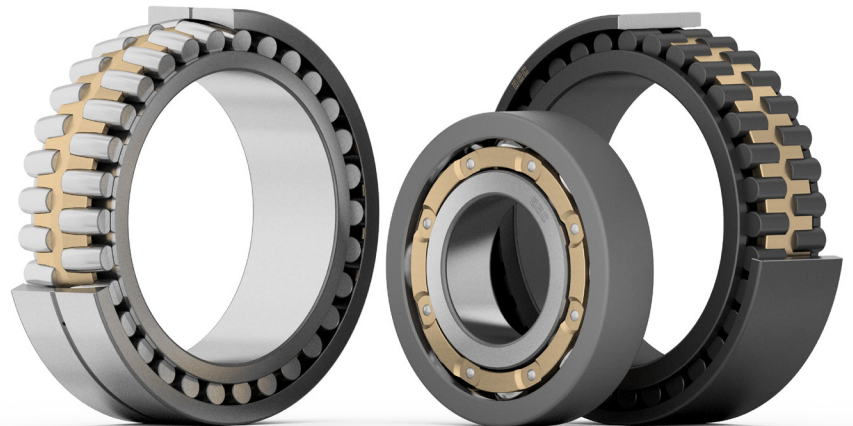


aec



Think Motion | Think AEC

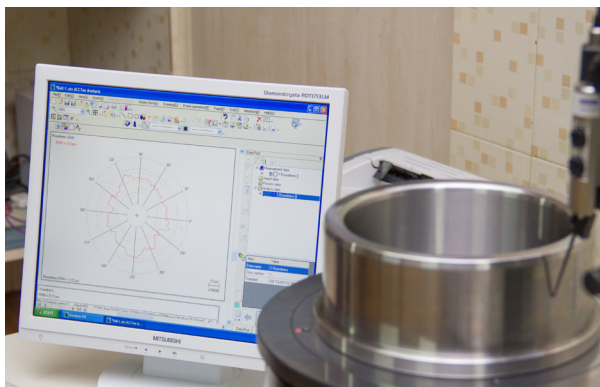
Wind Mill Bearings



AEC Bearings for Wind Mill Applications

For the past 20 years, wind power has gained widespread acceptance as the cleanest and most environmental friendly form of energy. Challenges in the development of wind power generation include increasing system reliability and reducing operation costs. Bearings are one of the most important components of wind turbines and require designs that optimize reliability and economic efficiency while taking into account the characteristics of the applications.

Onshore or offshore, wind turbines operate under extremely varying conditions. High winds or rough storms generate highly-dynamic forces with extreme loads that can change suddenly. These conditions can limit turbine performance and reliability, especially due to bearing-related issues.



Optimized for Tough Conditions

As the requirement for power generation continuously increases, the turbines grow increasingly large and move to remote locations. This, combined with the operating conditions, makes it very costly to maintain or repair the wind turbines.

Considering these challenges, AEC works with leading OEMs and, together with our extensive engineering, offers bearings that are designed to improve performance, reliability, and maintenance intervals. AEC introduces methods to optimize wind turbine bearing design and its features to help increase turbine uptime and productivity and achieve the desired ROI. With an extensive knowledge of design and manufacturing as well as highly trained engineers, AEC has both, production capability and the ability to provide technical service to ensure proper function throughout the design life of the wind turbines.



AEC Advantage

- Synergistic development with customer
- Design & manufacturing for wide range of products
- Specially developed production & inspection techniques
- Highest quality, reliability, & traceability
- Short turn-around times

AEC Bearings offer

- high static & dynamic load capacities
- performance in varying operating conditions
- high reliability & up-time
- lower maintenance costs

Main Rotor Shaft Applications

Standard and Custom

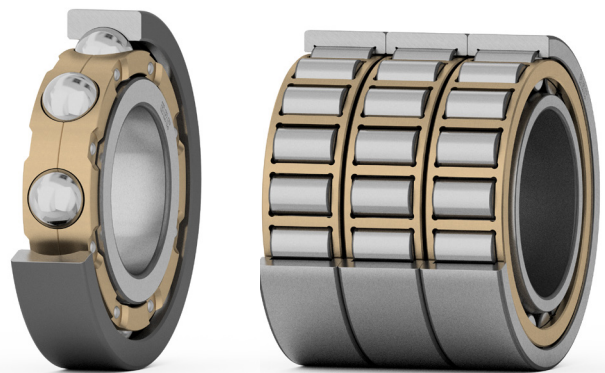
- Cylindrical Roller Bearings
- Spherical Roller Bearings
- Tapered Roller Bearings



Gearbox & Generator Applications

Standard and Custom

- Cylindrical Roller Bearings
- Angular Contact Ball Bearings
- Insulated Bearings





AEC Bearings

Austin Engineering Company Limited, AEC, is the manufacturer of the widest range of rolling element bearings in a single plant in India without any domestic or foreign collaboration.

Founded by five technocrats in 1973, today AEC has grown into a public limited company manufacturing over 6000 size/types of high quality bearings and their components.

AEC has

- over 4 decades of manufacturing excellence and innovation
- ISO 16949, ISO 9001, ISO 14001, ISO 18001 certifications (TUV Rheinland)
- customer base across 4 continents
- wide range of standard and custom products spanning across various applications

For more information please contact

Austin Engineering Company Limited

Village - Patla, Taluka - Bhesan
Junagadh 363030, Gujarat
INDIA
+91 2873 252223
+91 2873 252268
sales@aec.com
www.aec.com

Your local AEC Representative

Austin Engineering Company USA

12600 Deerfield Parkway, Suite 100
Alpharetta, GA 30004
INDIA
+1 6787997880
aec-usa@aec.com
www.aec.com

Although every care has been taken to ensure the accuracy of the information contained in this publication, AEC accepts no liability whatsoever due to errors or omissions. AEC reserves the right to change any product specifications. All rights reserved.
© Austin Engineering Co. Ltd.